



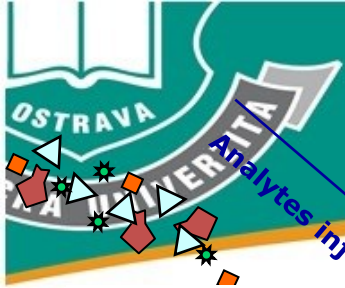
VŠB–Technical University of Ostrava

Biologická aplikace SPR

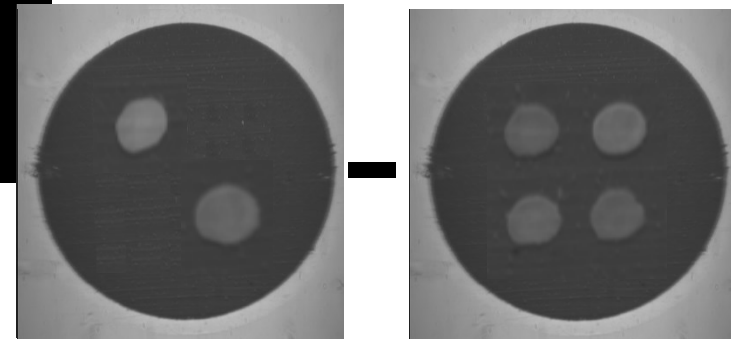
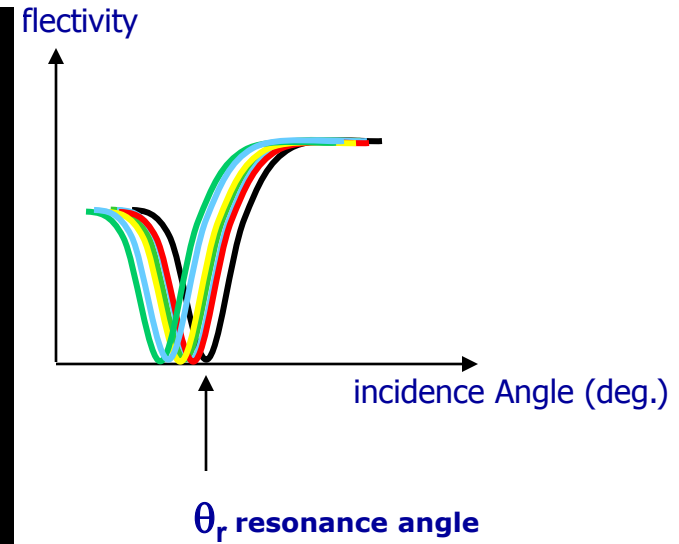
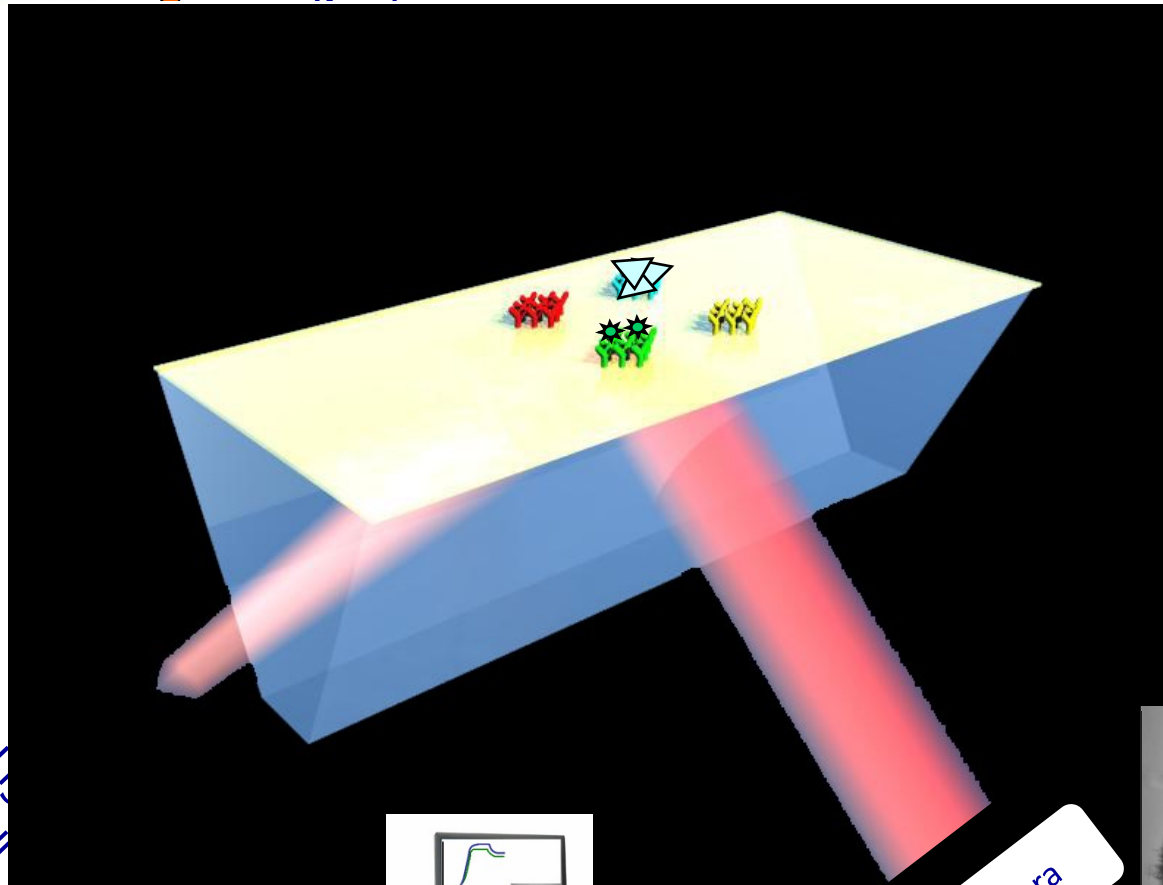
Biological application of SPR

Michal Lesňák

VŠB-TU Ostrava, Centrum nanotechnologií,
17. listopadu 15,
Ostrava – Poruba 708 33, Česká republika

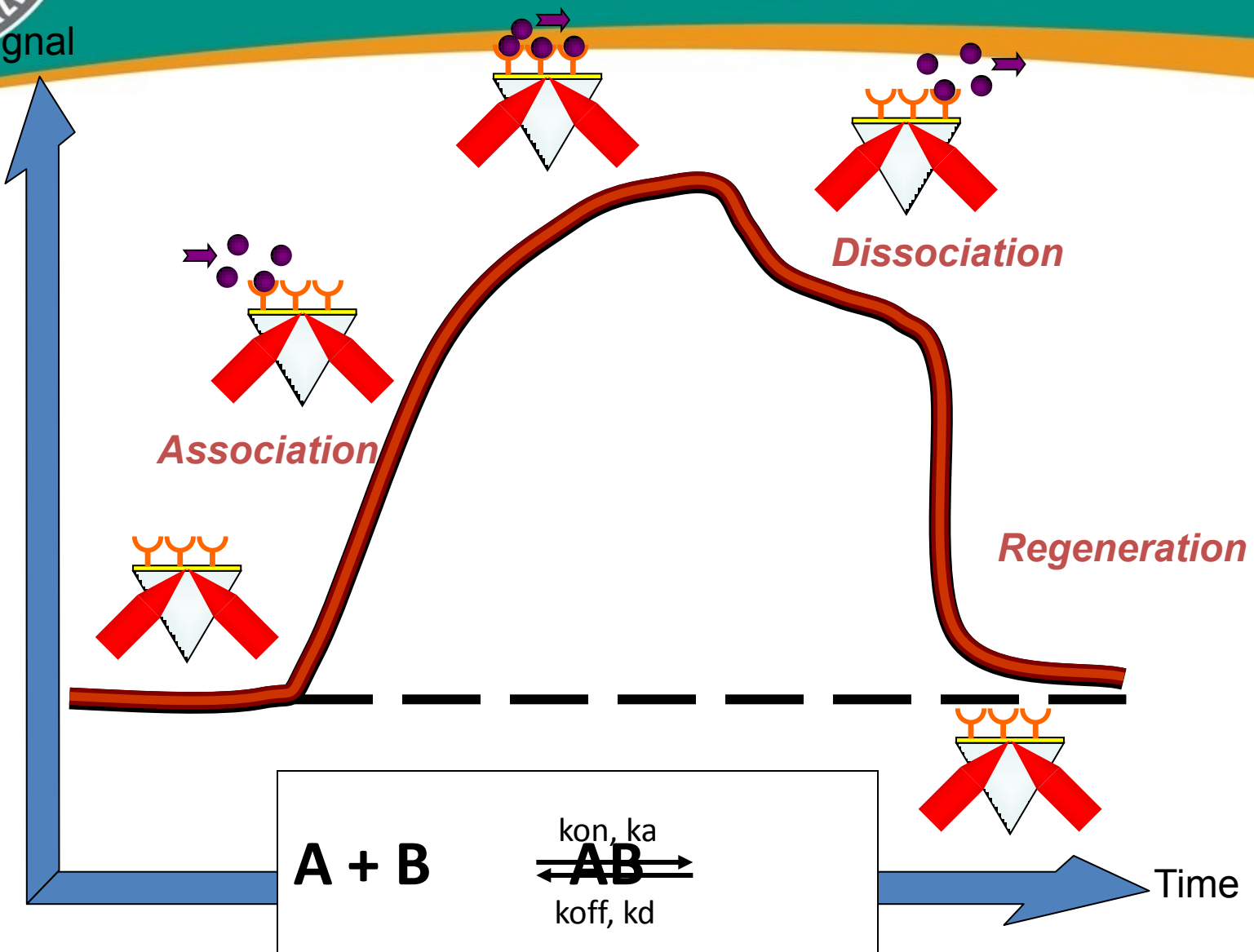


SPRi principle

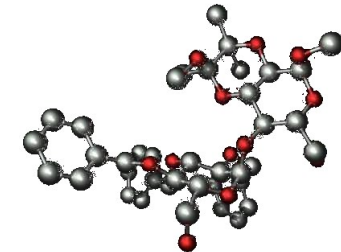
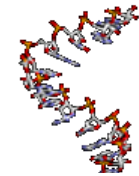
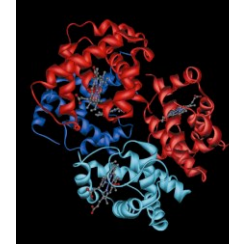


Source

Kinetic curve



- Proteins (enzymes, antibodies, hemoglobin, keratin, ...): amino acid polymers
- Nucleic acids (DNA, RNA): nucleotide polymers
- Carbohydrates: sugar polymers
- Bacteria



Ovalbumin, HSA, Cystatin C,